

# Society for Range Management



## ARIZONA SECTION

### President

Jim Sprinkle  
928-474-4160  
[sprinkle@cals.arizona.edu](mailto:sprinkle@cals.arizona.edu)

### President-Elect

Alvin Medina  
928-853-1391  
[almedina@fs.fed.us](mailto:almedina@fs.fed.us)

### Past President

Bill Edwards  
520-364-6811  
[wedwards@fs.fed.us](mailto:wedwards@fs.fed.us)

### Vice President

Don Luhrsen  
[dluhrsen@fs.fed.us](mailto:dluhrsen@fs.fed.us)

### Secretary

Alisha Phipps  
[Alisha.phipps@az.usda.gov](mailto:Alisha.phipps@az.usda.gov)

### Treasurer

Kendall Brown  
520-281-2296  
[kbrown03@fs.fed.us](mailto:kbrown03@fs.fed.us)

### Directors North

Ken Gishi  
928-524-2652 x117  
[Kenneth.Gishi@az.usda.gov](mailto:Kenneth.Gishi@az.usda.gov)

Chris Thiel  
[cthiel@fs.fed.us](mailto:cthiel@fs.fed.us)

### Directors South

Pete Sundt  
520-281-2296  
[psundt@zokes.com](mailto:psundt@zokes.com)

Kent Ellet  
[kellet@fs.fed.us](mailto:kellet@fs.fed.us)

### U of A Student President

Ashley Shepherd  
[ashleys3@email.arizona.edu](mailto:ashleys3@email.arizona.edu)  
ASU Student President

Cody Mosley  
[Cody.Mosley@asu.edu](mailto:Cody.Mosley@asu.edu)  
*Representative*  
[Michael.P.Sorensen@asu.edu](mailto:Michael.P.Sorensen@asu.edu)

July, 2009

President's Message

[Http://azrangelands.org](http://azrangelands.org)



Hi all,

Al Medina and his agenda committee have planned a very interesting and educational summer meeting to be held in Payson at the site of 1990 Dude Fire, which at that time was the largest fire to date in Arizona. The Thursday program will be located at several field sites on the Dude Burn and is entitled ***“Lessons Learned To Mitigate Future Catastrophic Fire Impacts on Arizona Rangelands”***. On Friday's program, we will explore a juniper treatment and look at three different ecological sites (with soil pits) located very close together but with quite different vegetation. The discussion should be very stimulating. I am looking forward to this program to be held in a beautiful part of Arizona. We have secured exclusive use of the Fox # 1 and 2 units of the Horse Camp on the outskirts of Payson. For those interested, we now have the capability for you to register with a credit card for our summer and winter meetings. Thanks to Kendall Brown and Bill Edwards, this is available on the parent society Webpage which can be accessed from our Arizona Section webpage at <http://azrangelands.org/>.

If any of you have agenda items you would like to have the board of directors consider for the next board meeting or general membership meeting, please let me or any of the board members know.

*Building Partnerships Through Collaborative Rangeland Monitoring*



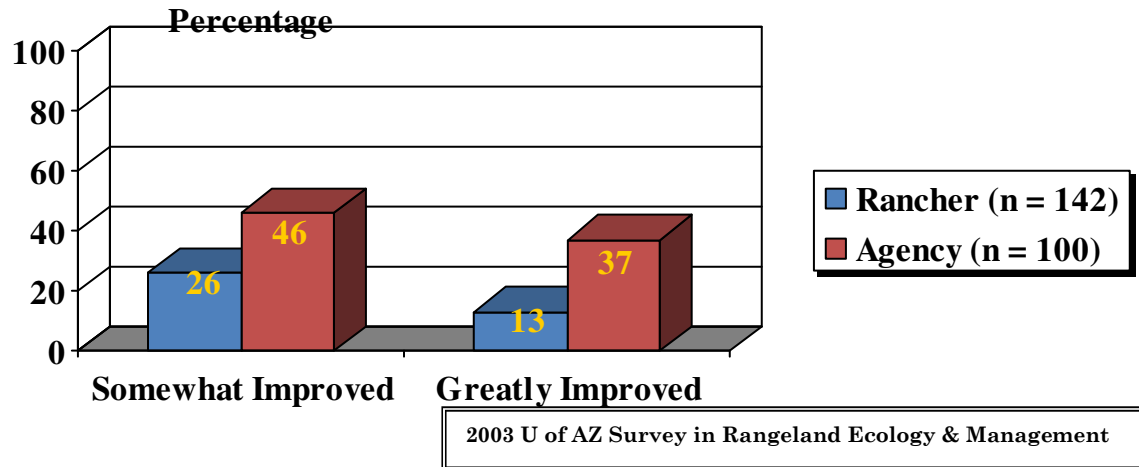
**Collaborative rangeland monitoring on the Ellinwood Allotment. Left to right, Scott Stratton (NRCS), Woody Cline (Ellinwood Ranch), Bill Barcus (USFS, Payson Ranger District), Jim Maynard (Southwest Resource Consultants, LLC), Vanessa Prileson and Chris Thiel (USFS, Payson Ranger District).**

I have been considering lately the immense benefits which come from “rubbing shoulders together” as data is collected on the ground by agency and university employees, ranchers, and other interested citizens. In a 2003 University of AZ survey on Cooperative Extension Range-

land Monitoring <http://www.srmjournals.org/pdfserv/i1551-5028-58-1-89.pdf> from 142 ranchers in five counties with United States Forest Service (USFS) grazing allotments, 13% reported that their relationship with the USFS had *greatly improved as a result of monitoring* and 26% reported that their relationship with USFS had *somewhat improved*. For agency employees (n = 100), they reported that as a result of permittee or landowner participation in monitoring, relationships with permittees had *greatly improved* in 37% of the cases and had *somewhat improved* in 46% of the cases.

Gathering data together allows you to see if your opinions of what is happening on the ground are validated. By using standard protocols agreed to by all involved parties at key areas collaboratively identified, individuals use the same

### As a result of monitoring, how has your relationship changed?



“instrument” for measuring responses to management. While interpretations of “why” vegetation responded as it did may differ, there is usually little disagreement as to “what” changed or “how” the data were collected. One of the most beneficial activities of monitoring is when members of the collaborative team sit down together at each key area and discuss what changed from last year and why they think it changed.

See ya,

*Jim Sprinkle*

#### Thursday Chuck-Wagon Dinner Menu:



*Smothered Steak*

*Beans*

*Fried Potatoes*

*Salad*

*Biscuits*

*Peach and Cherry Cobbler*

*Lemonade and Iced Tea*



Discussing riparian areas on the X4 Ranch near Globe.

## Abstract

Pete Sundt

Rangeland ecology has been dominated by a systems approach, in which collections of individuals and species interacting with the physical environment are treated as a system. The approach has had heuristic value, but uncritical and careless use of systems concepts and jargon are widespread, impede the development of theory, and distract attention from the site-specific details of factors and processes that ultimately determine the distribution, abundance and dynamics of organisms in rangelands. Systems concepts have their origin in mathematical models, which can show a variety of dynamic behaviors depending on parameter values, numbers of variables, presence of feedback and order of equations.

Use of systems concepts in rangeland ecology requires that real rangeland ecosystems have analogs in dynamical systems models, but in many cases these analogs are assumed, not demonstrated, and the use of systems concepts and jargon imply specific knowledge that is not always justi-

fied. Given the variety of possible dynamical systems behaviors and the difficulty of characterizing rangeland ecosystems there is no *a priori* reason to expect equilibrium, stability or resilience in a given rangeland ecosystem.

A theory based on the ecological site concept may be a more fruitful way to organize thinking and research in rangeland ecology, because it emphasizes the distinctiveness of the organisms, processes and physical factors at particular places. I contrast the ecological site concept—which integrates the full suite of abiotic factors affecting potential vegetation—to the ecological site classification system, which inevitably lumps biologically-significant variation in order to form practical types. Understanding of the spatial and temporal patterns in rangeland will come mostly from careful analysis of specific sites using advanced knowledge of geomorphology, geochemistry, pedogenesis, plant physiology, facilitative and competitive interactions and a host of related details, all in a context of history.



**2009 SUMMER MEETING REGISTRATION**

The Registration Form can be accessed at the Arizona Section Web Site – [azrangelands.org](http://azrangelands.org).

\*\*\*\*\* **REGISTRATION**

**FORM (Due July 15, 2009)**

NAME: \_\_\_\_\_

ORGANIZATION: \_\_\_\_\_

SPOUSE/CHILDREN/GUESTNAMES:  
\_\_\_\_\_

MAILING ADDRESS: \_\_\_\_\_  
\_\_\_\_\_

PHONE: \_\_\_\_\_ EMAIL: \_\_\_\_\_

**DO YOU BELONG TO AN SRM SECTION?**

Circle one: Yes No Which Section? \_\_\_\_\_

\$80/member \_\_\_\_\_

\$95/non-member: \_\_\_\_\_

\$65/student/youth/spouse \_\_\_\_\_

\$100/late registration (post July 18) \_\_\_\_\_

**TOTAL AMOUNT ENCLOSED:** \_\_\_\_\_

Registrations must be received by July 15, 2008 to guarantee meals

Registration includes: Breakfast & Lunch (7/22-24) and Cowboy Dinner (7/23).

Please indicate *if* you desire vegetarian meals. Yes \_\_\_\_\_

**Questions about the meeting/meals or membership - Contact Al Medina at [almedina777@hotmail.com](mailto:almedina777@hotmail.com) or 928-853-1391.**

\*\*\*\*\*

MAIL THE REGISTRATION and INCLUDE A CHECK OR MONEY ORDER TO:

Kendall Brown  
USFS - Coronado National Forest  
303 Old Tucson Rd.  
Nogales, AZ 85621  
Phone: 520-237-3702  
Email: [kbrown03@fs.fed.us](mailto:kbrown03@fs.fed.us)

## Hotels

A block of 20 rooms is being held until July 8, at the Best Western Payson Inn, 801 N. Beeline Highway. This hotel is located about 2.5 miles south of Houston Mesa Road. Call directly to make a reservation and ask for the “**SRM MEETING**” rates: (928)-474-3241 or 800-247-9477. Room rates are \$79.99/night for Wednesday and Thursday, and \$99.99 for Friday night.

## Other Hotels in Payson

Holiday Inn, 206 S. Beeline Highway: 1 877 865 6578

Days Suites Payson, 301 A South Beeline Highway: 928-474-9800

Majestic Mountain inn, 602 E. Highway 260: (928) 474-0185

Super 8 Motel, 809 East Highway 260: (928) 474-5241

Budget Inn, 302 S. Beeline Highway: 928-474-2201

Paysonglo Lodge, 1005 South Beeline Highway: 800) 772-9766

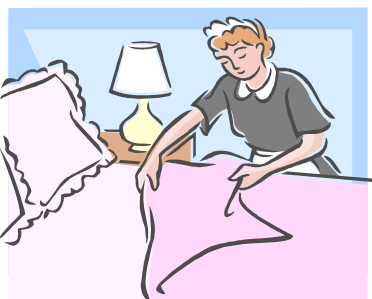
America's Best Value Inn, 811 S. beeline Highway: 928-474-2283

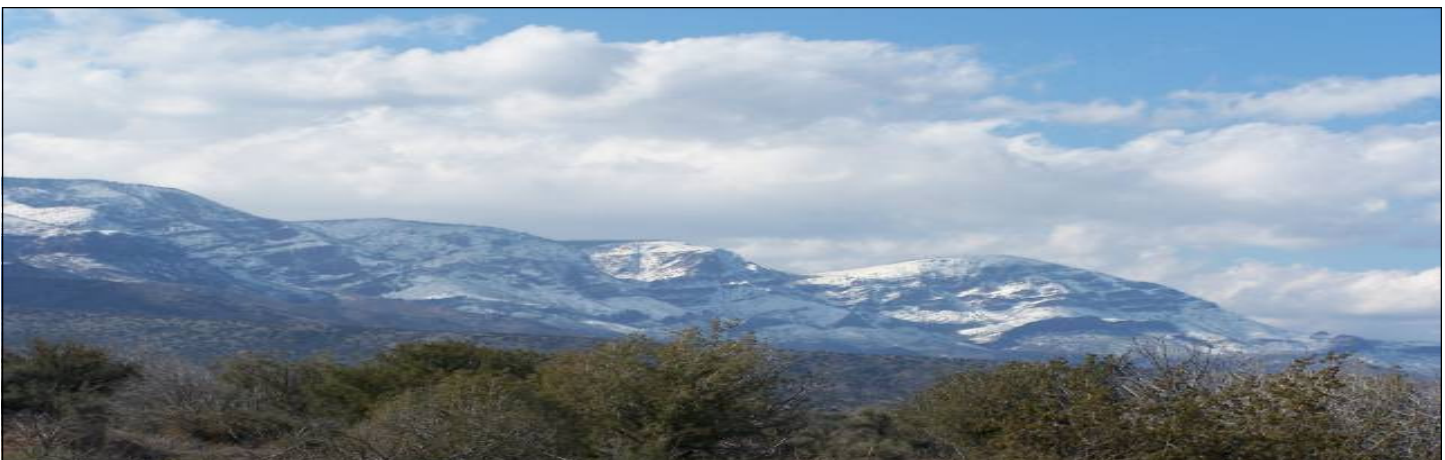
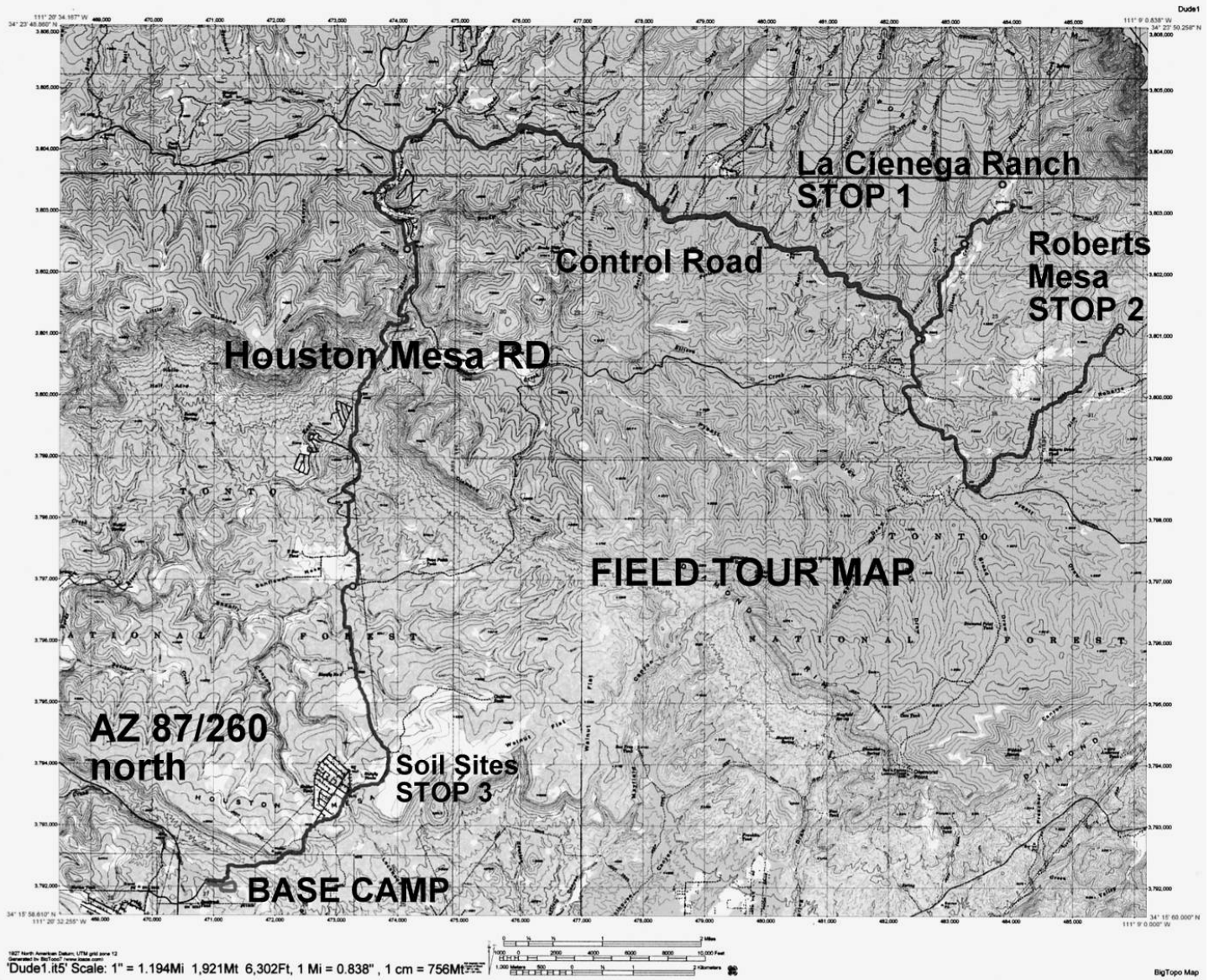
Matazal Hotel and Casino, 0.5 mile south of Payson on 87: (928) 474 6044

Motel 6 of Payson, Highway 87 at 101 W. Phoenix St.: 928-474-4526

## Miscellaneous

Lodging Guide: <http://www.paysonroundup.com/community/lodging/>





The Editor, News Staff, Interns, Print Technicians, Investigative Reporters and Newsletter Committee members would like to thank the following people for making this issue become a reality: Jim Sprinkle, Pete Sundt, Al Medina, Wendy McCourt, Willie Sommers, and Ken Gishi. All input, articles, pictures, graphics, etc. will be considered for inclusion.

May 28, 2009

Dear Al Medina,

First of all, I would like to thank the Arizona Section of the Society for Range Management for all the opportunities and support that you have given the Student Chapter here at ASU. Because of this, our students were able to participate in the Plant ID Contest, the URME, and the Rangeland Cup at the February SRM Conference in Albuquerque. We are already preparing for the next Plant ID Contest in Denver, with 14 students! It is our hope that this high turnout of interested students will set a trend for ASU students. With most of our students in more of a wildlife concentration, we are steadily trying to broaden their knowledge and understanding of rangelands.

Secondly, our student chapter has elected new officers. These officers are:

Cody Mosley—President

Michael Sorensen—Vice President *Representative* for SRM

Kyle Thompson—Vice President *Representative* for TWS

Chelsea Little—Vice President *Representative* for AFS

Nicholas Clinite—Treasurer

Ashley McCabe—Secretary

Michael Sorensen will be taking my place as your contact for the Wildlife and Restoration Student Association and will serve as the representative for this student chapter. His email is Michael.P.Sorensen@asu.edu. I am not sure if WRSA will be able to help out at this summer's meeting since most of our students are interning currently. However, Michael will be the one for you to contact.

It truly has been an honor serving as your representative and I feel that SRM has enhanced my education and career goals immensely. Please pass this on to the rest of the board. I will see you all at the Summer Meeting in Payson!

Sincerely,

Wendy McCourt

## ARIZONA SECTION SOCIETY FOR RANGE MANAGEMENT— 2009 SUMMER MEETING PROGRAM

July 22-24, 2009

**THEME: “Lessons Learned To Mitigate Future Catastrophic Fire Impacts on Arizona Rangelands”**

**WHERE:** Houston Mesa Horse Camp, Payson, Arizona

**CONTACT:** Al Medina (928)-853-1391 email: almedina777@hotmail.com

In 1990, the Dude Fire was the largest wildfire in Arizona history at 24,174 acres. This 2-day summer workshop examines long-term changes in rangeland and riparian conditions resulting from the 1990 Dude Wildfire, including wildlife management issues related to the Chiricahua leopard frog, fisheries, elk, and rangeland restoration. A “Lessons Learned” session will culminate Thursday field sessions. On Friday, we will (1) visit a demonstration site of a permittee’s incorporation of P-J treatments into his range management plans, and (2) participate in a demonstration/discussion with soil scientists on the applicability of Ecological Site Descriptions, a new way of understanding range site potential.

Our base camp will be at the Houston Mesa Horse Camp group site just outside (North) of Payson. We have reserved two units - Fox#1 and Fox#2, each with capacity of up to 65 people. Sites are reserved and there is no charge for attendees. The campsite is located north of Payson, on Houston Mesa Road, and about ½ mile east of Highway 87-Houston mesa Rd intersection.

Breakfast and lunches: Courtesy of ASU Range Club

Table 2. Winter and Summer Meetings of the Arizona Section, Society for Range Management (1996-2006)

Year	Winter Meeting	Summer Meeting
1996	Arizona Section Member Survey and Action Plans Hotel Park Tucson, Tucson	Mine Reclamation and Black Mesa Mining Complex Tour Navajo National Monument
1997	People Working Together, What Works Eastern Arizona College, Thatcher	Tonto Basin History and Willow Flycatcher Habitat Tour Tonto National Forest, Roosevelt Lake
1998	Information on Changing Policies Holiday Inn Palo Verde, Tucson	California Condor and Willis Allotment Tour Kaibab National Forest, Fredonia
1999	Resource Management Issues # Francisco Grande Resort, Casa Grande	Fort Rucker, Rucker Lake and El Coronado Ranch Tour Chiricahua Mountains
2000	Water Quality and Arizona Agriculture Francisco Grande Resort, Casa Grande	Arizona Ecological Site Symposium Holiday Inn Palo Verde, Tucson
2001	Collaboration * Crowne Plaza Hotel, Phoenix	NRCWAY Camp Tour Coconino National Forest, Mormon Lake
2002	Water Issues Roosevelt Lake, SRP Facility, Globe	Ecological Restoration in the Ponderosa Pine Forest NAU Campus, Coconino National Forest, Flagstaff
2003	Desert Tortoise Habitat Management ** Flamingo Hotel, Laughlin, NV	Drought Management for Sustainable Range Resources V Bar V Ranch, Happy Jack
2004	Conservation: From Theory to Practice Apache Gold Casino Resort, San Carlos	Borderland Issues: Implications to Natural Resource Mgmt. Bear Valley Ranch, Nogales
2005	Innovative Technologies for Range Management Prescott Resort, Prescott	Plant Community Dynamics: Understanding State & Transition Model, Tonto National Forest, Young
2006	Climate & Rangelands: Beyond Boxes & Arrows Apache Gold Casino Resort, San Carlos	Walnut Gulch Experimental Watershed Tour Whitewater Draw Wildlife Area, McNeal

# Held in conjunction with the Arizona Association of Conservation Districts annual meeting

\* Hosted with the Arizona Association of Conservation Districts, Arizona Chapter of the Soil and Water Conservation Society, and the Arizona Coalition of Resource Conservation and Development Councils

\*\* Hosted with the Nevada Section, Society for Range Management



Table 1. Summary of the Board of Directors, Arizona Section, Society for Range Management (1996-2006)

Year	President	President Elect	Vice-President	Secretary-Treasurer	Directors North	Directors South	ASU Chapter	U of A Chapter
1996	Mark Pater	Bill Brandau	Eddie Alford	Amy Stewart	Lee Hughes Vern Pfannenstiel	Larry Humphrey Kristen Egen	Lara Katler	Chuck Barclay
1997	Bill Brandau	Eddie Alford	Lee Hughes	Amy Stewart	Vern Pfannenstiel Lori Metz	Kristen Egen Bill Edwards	Bill Yoder	Wilma Renken Lacey Halstead
1998	Eddie Alford	Lee Hughes	Steve Cassady	Mark Pater	Lori Metz Sandra Jaeger	Bill Edwards Frank Toupal	Cheri Boucher Kurt Schonauer	Lacey Halstead Gwen Oldham
1999	Lee Hughes	Steve Cassady	Kristen Egen	Mark Pater	Sandra Fabritz Brian Wakeling	Frank Toupal Dan Bell	Kurt Schonauer %	Gwen Oldham Jason Martin
2000	Steve Cassady	Kristen Egen	Sandra Fabritz	Deborah Smith	Brian Wakeling Clare Hydock	Dan Bell Mark Hocken	%	Jason Martin Rachel Meade
2001	Kristen Egen	Sandra Fabritz	Larry Howery	Deborah Smith	Clare Hydock Jeff Schalau	Mark Hocken Dean Fish	Willie Sommers	Rachel Meade
2002	Sandra Fabritz	Larry Howery	Mark Hocken* Jeff Schalau	Mark Pater**	Jeff Schalau Steve Cassady Norm Lowe	Dean Fish Bruce Munda	Missy Debnar	Willie Sommers
2003	Larry Howery	Jeff Schalau	Dean Fish	Dan Bell	Norm Lowe Keith Curry	Bruce Munda Emilio Carrillo	Derek Stauffer	Joe Harris
2004	Jeff Schalau	Dean Fish	Bruce Munda	Dan Bell	Keith Curry Rachel Meade	Emilio Carrillo Bill Edwards**	Derek Stauffer	Joe Harris
2005	Dean Fish	Bruce Munda	Dennis Moroney	Dan Bell	Rachel Meade Liz Didier	Bill Edwards John Hays	Nicholas Rome	James Heitholt
2006	Bruce Munda	Dennis Moroney	Bill Edwards	Byron Lambeth	Carol Boyd Willie Sommers	John Hays Katie Cline	Sean Knapp Stacy Burleigh	Katie Lee Emily Hurd

% ASU Environmental Resources Program moved to the East Campus and there was no replacement for Kurt Schonauer

\* Relocated to another state, Jeff Schalau became the Vice-President and Steve Cassady assumed the Director North vacancy

\*\* Second term on the Board of Directors

## Joint Agreement on Navajolands promotes partnership

by Ken Gishi

The Bureau of Indian Affairs, Navajo Region entered into an interagency agreement with the Natural Resources Conservation Service, Arizona to provide technical assistance for the ecological site correlations for four soil surveys on the Navajo Nation. The soil survey areas encompass about 9.9 million acres of range and forestlands. Through the agreement the NRCS will conduct ecological site correlations for the mapped soil survey areas, develop or revise ecological site descriptions where needed, and provide technical assistance pertaining to this agreement. The BIA and Navajo Nation will use the information provided to improve resource planning through the use of updated soil maps and ecological site descriptions. The agreement is in its second year with correlation work progressing along steadily on two soil surveys. To date, 25 ecological site descriptions were revised or developed with correlations completed on 2.8 million acres through the agreement.

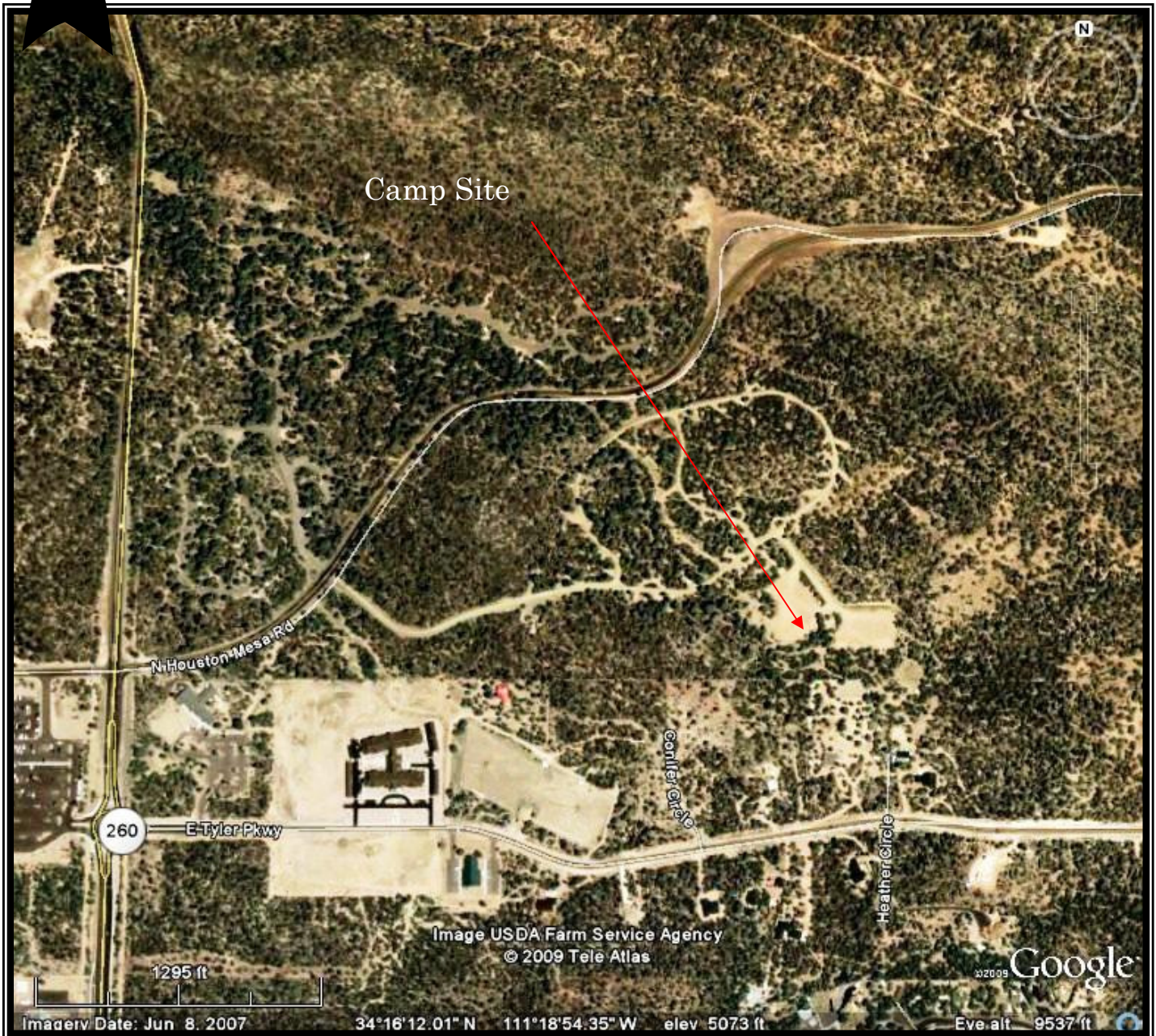
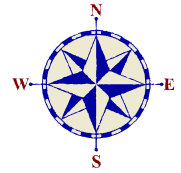
This partnership between the NRCS and BIA has resulted in some additional highlights worth noting. First of all, in an effort to increase coordinated planning, a joint conservation planning course for BIA and tribal staff was taught by various NRCS staff from around the state, including local Navajo Nation district conservationists.

Secondly, the NRCS conducted a two-day workshop on Ecological Site Descriptions and their Development at the request of BIA staff. The workshop was well attended by a mix of NRCS, BIA and Navajo Tribe staff. Since that initial workshop, NRCS has provided follow-up training and technical assistance in the areas of rangeland inventory, ecological site identification, and range monitoring.

A 'tip of the hat' goes to Jim Dee, Regional Rangeland Specialist of the BIA-Navajo Region for his efforts and support of this partnership.



Local Navajo Permittee (far right, standing) with BIA and NRCS staff in the field



Houston Mesa Horse Campground is on north Beeline Highway (AZ 260/87), about 1.9 miles from the intersection of the Beeline Highway and the Heber Highway. From this intersection proceed north on 260/87 past the traffic control circle on Tyler PkWay, then make a right turn (East) unto Houston Mesa Road about  $\frac{1}{4}$  mile from the control circle, then make another right unto the Horse Campground. Select your campground unit of choice.

Additional maps are posted on [azrangelands.org](http://azrangelands.org).

The Ramada located at the large parking lot will serve as the principal meeting place for meetings, meals, and social gatherings.

~MEMBERSHIP INFORMATION~

Membership in the Society for Range Management is open to anyone engaged in or interested in any aspect of the study, management, or use of rangelands. Membership rights and privileges include: voting, committee service, nomination and election to offices, subscription to Rangelands journal and the SRM News. Arizona Section newsletter (for AZ Section members), discounted prices for publications, meeting registration fees, page charges and certification fees. For more information on membership in SRM or to request a Membership application, please contact Shai Schendel at the following e-mail: [Shai.Schendel@az.usda.gov](mailto:Shai.Schendel@az.usda.gov).

**\*\*ANNUAL MEMBERSHIP SPNSORSHIP\*\***

The Board of Directors opted to sponsor a regular membership to the Society for Range Management for one year. Section members are encouraged to submit nominations of an individual, who have not been members of SRM, would benefit from participation, would likely retain membership, and would participate in SRM activities. Submit nominations to Al Medina ([almedina777@hotmail.com](mailto:almedina777@hotmail.com)) along with a brief description of merit. The offer is intended as a membership drive measure on behalf of AZ-SRM. A final selection will be made by the Board of Directors and announced at the winter meeting.

Arizona Section-Society For Range Management

2324 E. McDowell

Phoenix, AZ 85006

